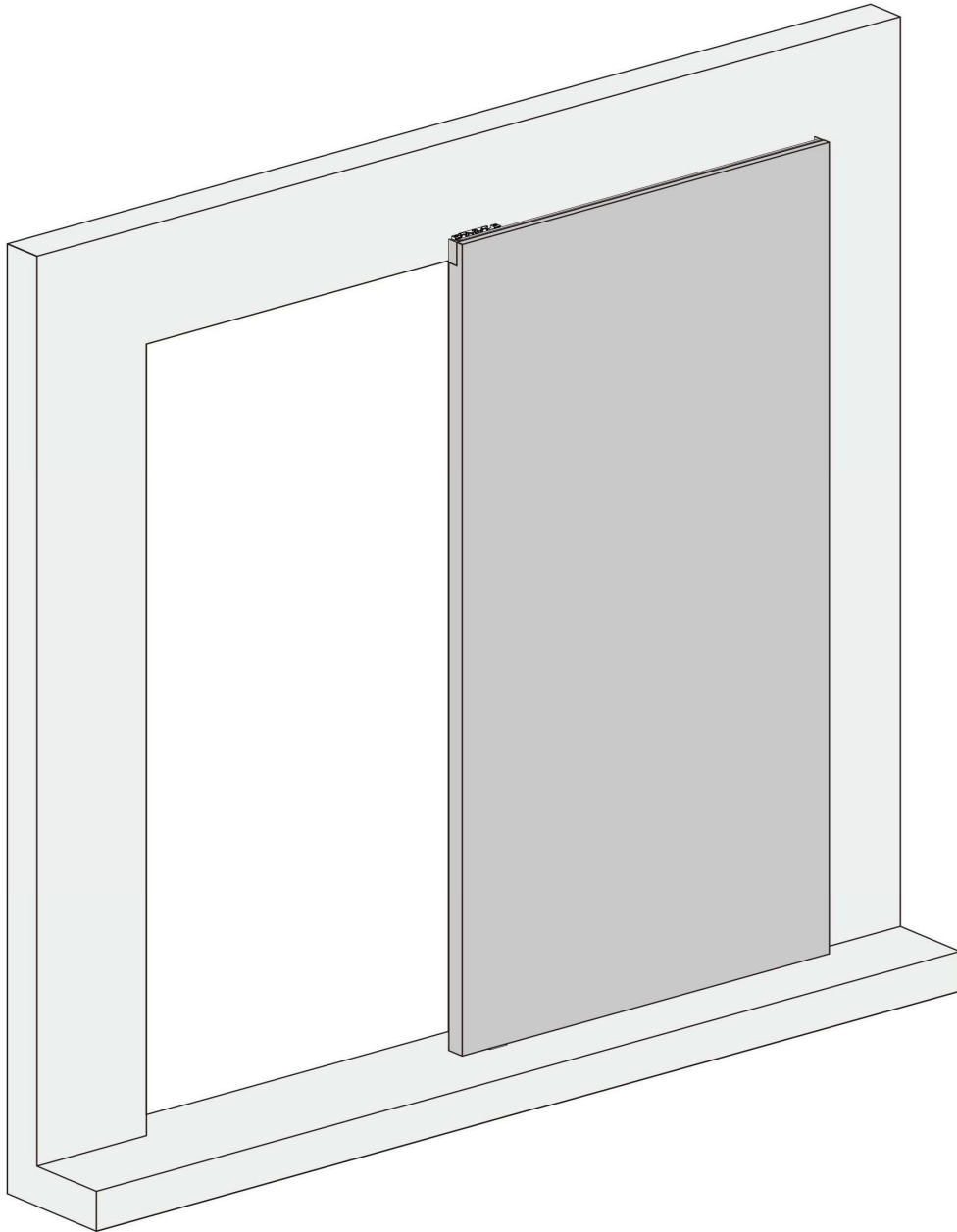




Installation Manual



Please check all order details and notes below, before you place order, when you place an order you confirm all details is correct and you agree whit all notes below:



We exclude the installation of cavity sliding doors in our quotation.

We exclude the preparation or factory fitting of door hardware from our quotation.

We exclude any painting, finishing, site measurements or site works.

The builder is to confirm all measurements and details prior to manufacture, including product suitability against specifications.

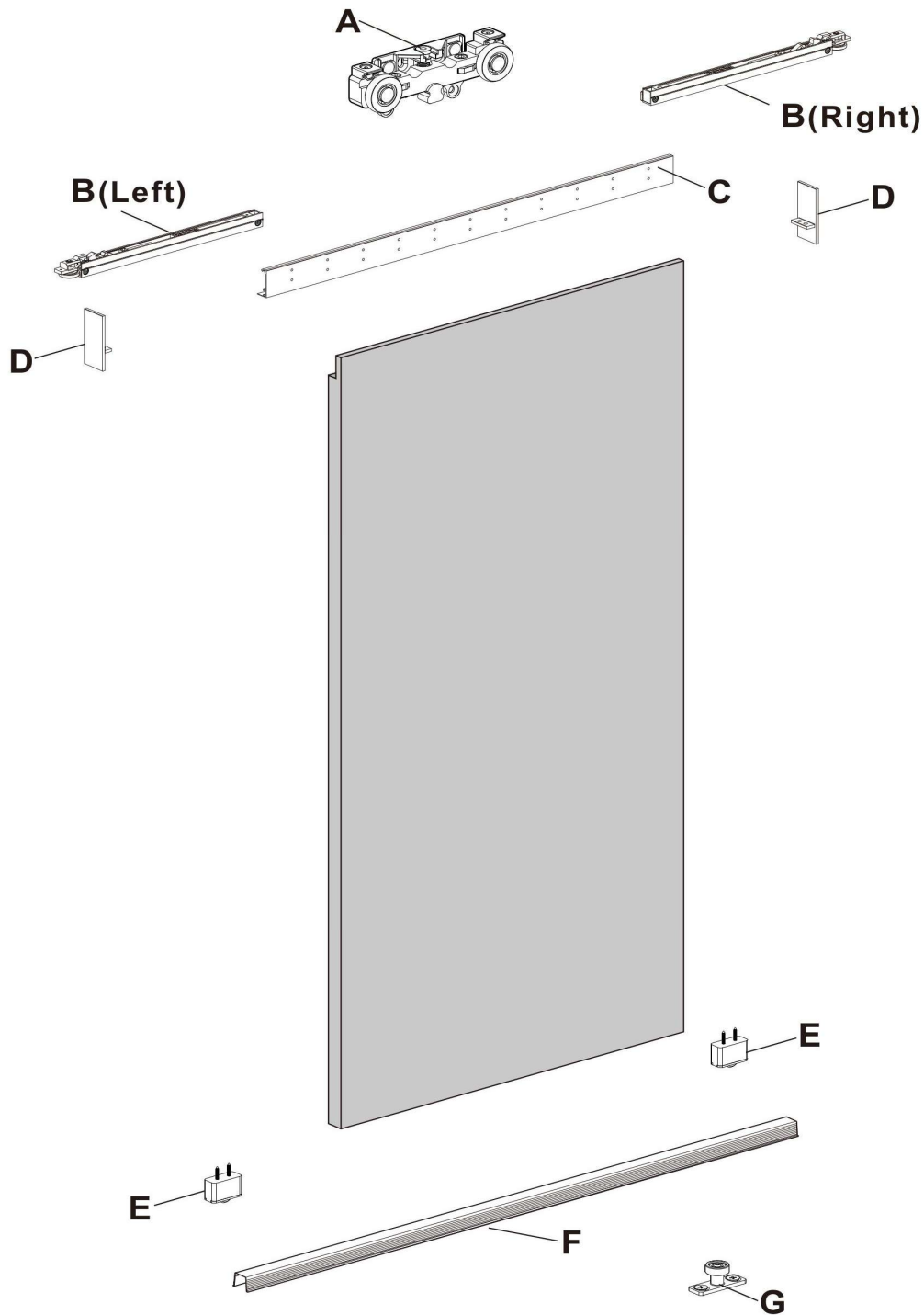
☎ 1300 15 15 50

Premium Sliding Doors

ABN 49 612 731 781



Components list



Please check all order details and notes below, before you place order, when you place an order you confirm all details is correct and you agree whit all notes below:



We exclude the installation of cavity sliding doors in our quotation.

We exclude the preparation or factory fitting of door hardware from our quotation.

We exclude any painting, finishing, site measurements or site works.

The builder is to confirm all measurements and details prior to manufacture, including product suitability against specifications.

☎ 1300 15 15 50

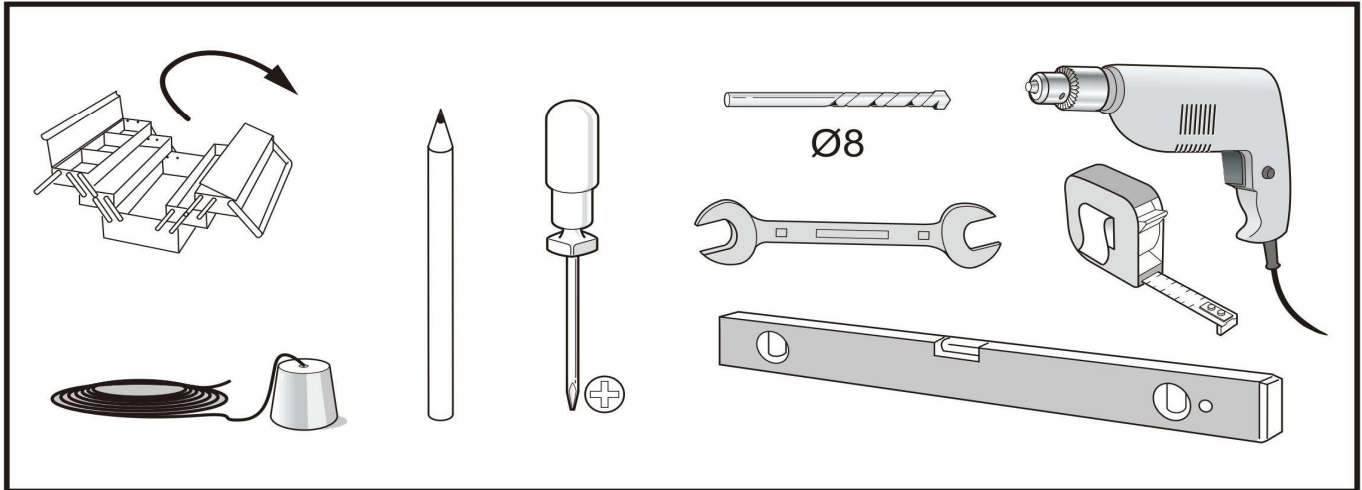
Premium Sliding Doors

ABN 49 612 731 781



Pre-installation

TOOLS REQUIRED

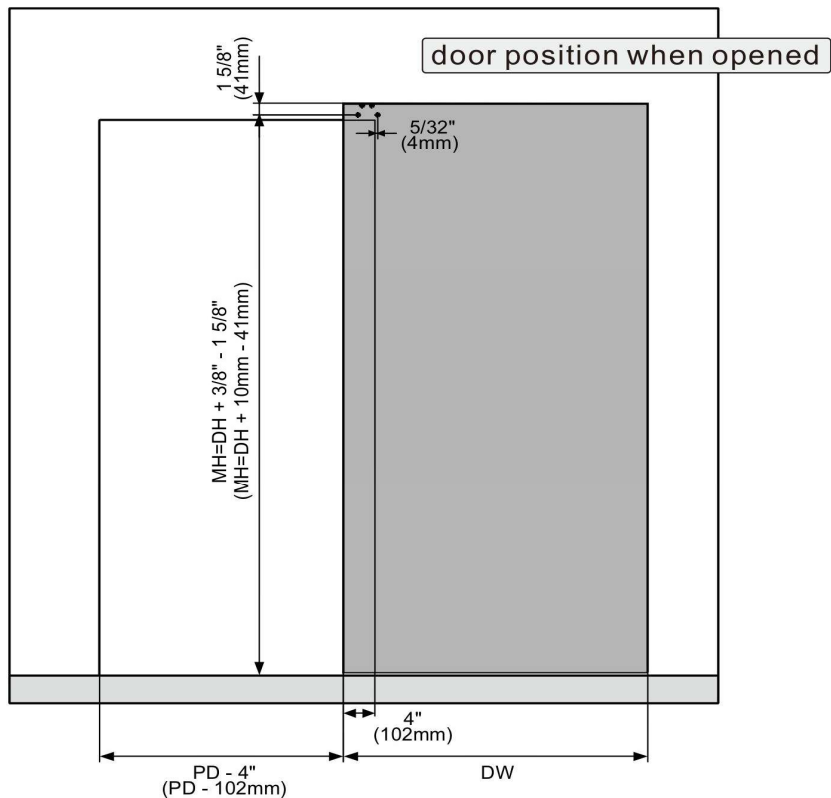
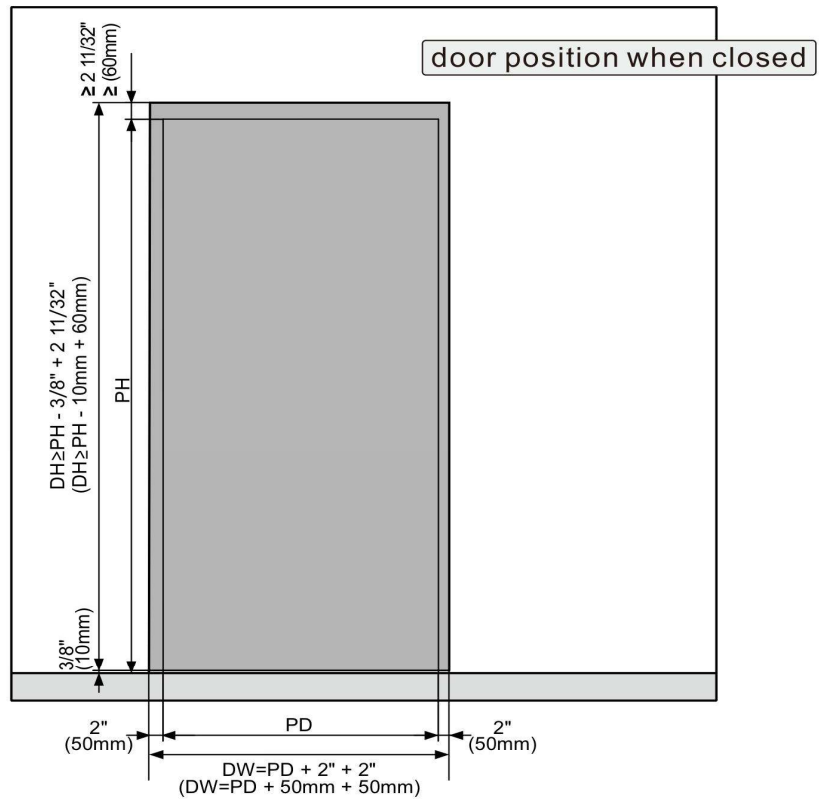


HARDWARE INCLUDED

A ST4.2x50 (x4) Ø8 (x4)	B Left(x1) Right(x1)	C (x1) ST3.5x13(22)	D (x1) (x1) ST2.9x9.5(x2)
E (x2) ST4.2x25 (x4)	F (x1)	G (x1) Ø8 (x2) ST4.8x38 (x2)	 (x1)

Door preparation.a

DW	Door Width
PD	Passage Width
DH	Door Height
PH	Passage Height
MH	Hanger Positioning



Please check all order details and notes below, before you place order, when you place an order you confirm all details is correct and you agree whit all notes below:



We exclude the installation of cavity sliding doors in our quotation.

We exclude the preparation or factory fitting of door hardware from our quotation.

We exclude any painting, finishing, site measurements or site works.

The builder is to confirm all measurements and details prior to manufacture, including product suitability against specifications.

1300 15 15 50

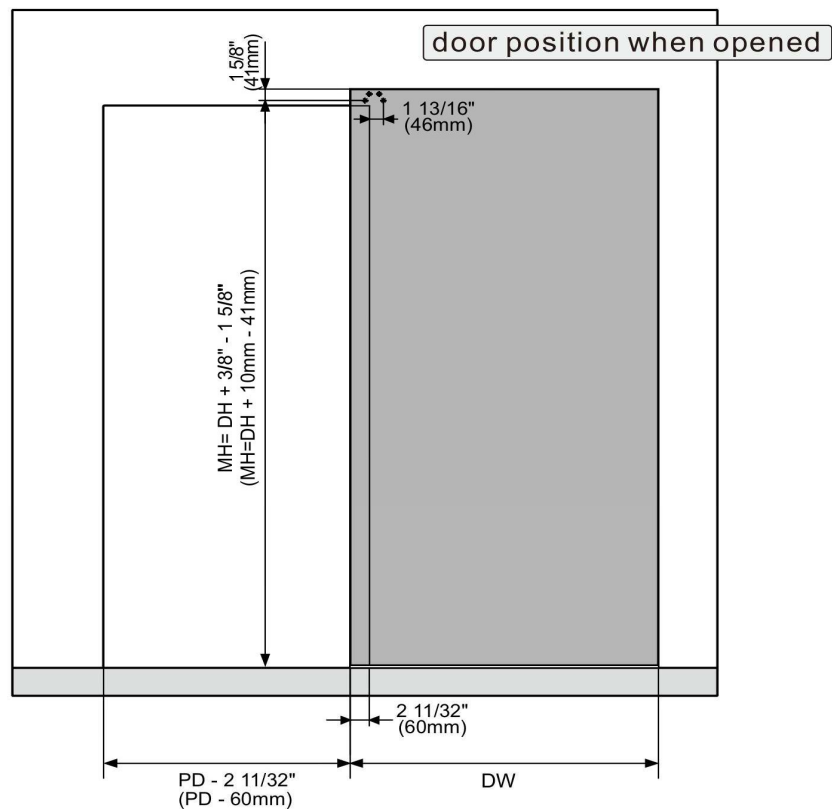
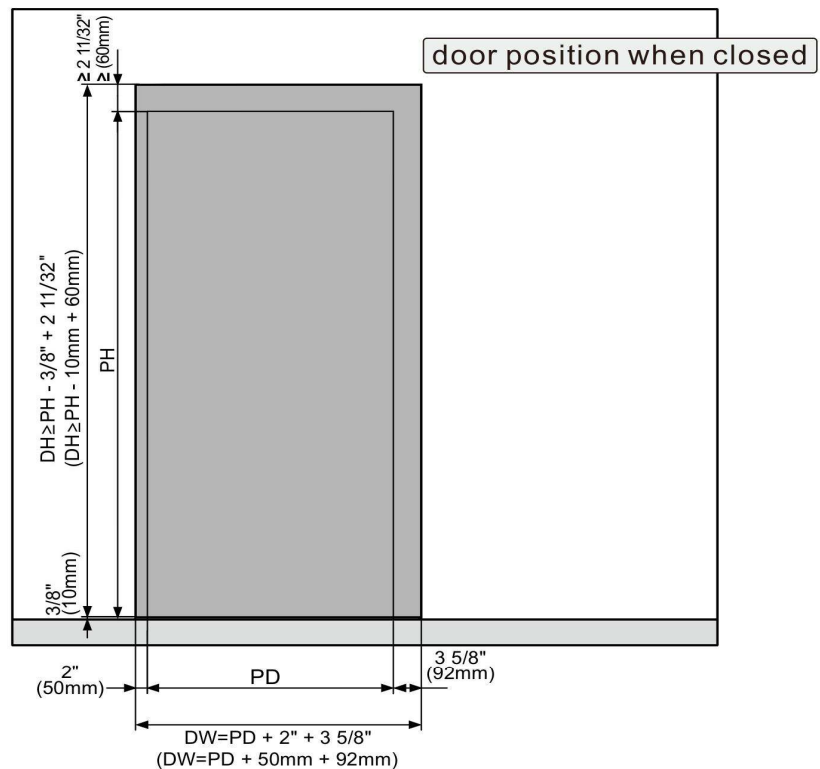
Premium Sliding Doors

ABN 49 612 731 781



Door preparation.b

DW	Door Width
PD	Passage Width
DH	Door Height
PH	Passage Height
MH	Hanger Positioning



Please check all order details and notes below, before you place order, when you place an order you confirm all details is correct and you agree whit all notes below:



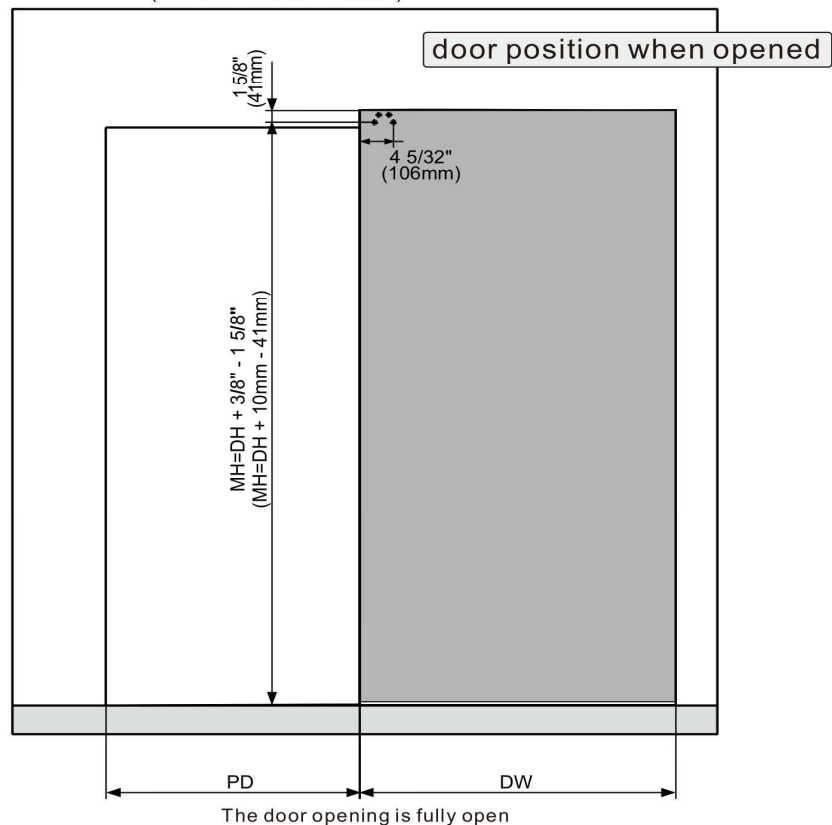
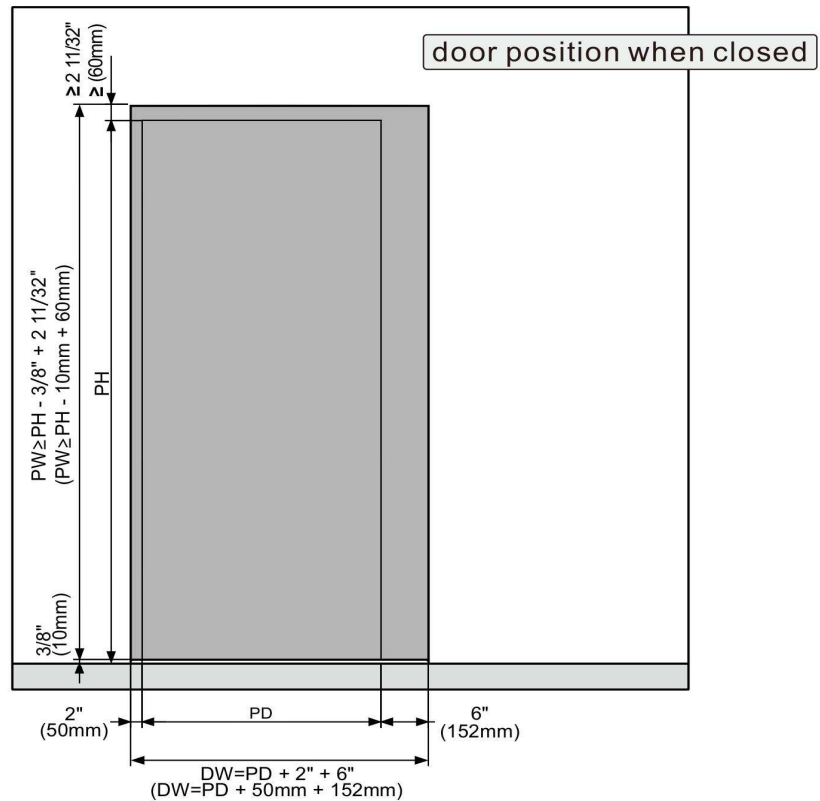
We exclude the installation of cavity sliding doors in our quotation.
 We exclude the preparation or factory fitting of door hardware from our quotation.
 We exclude any painting, finishing, site measurements or site works.

The builder is to confirm all measurements and details prior to manufacture, including product suitability against specifications.

1300 15 15 50
 Premium Sliding Doors
 ABN 49 612 731 781

Door preparation.c

DW	Door Width
PD	Passage Width
DH	Door Height
PH	Passage Height
MH	Hanger Positioning



Please check all order details and notes below, before you place order, when you place an order you confirm all details is correct and you agree whit all notes below:



We exclude the installation of cavity sliding doors in our quotation.

We exclude the preparation or factory fitting of door hardware from our quotation.

We exclude any painting, finishing, site measurements or site works.

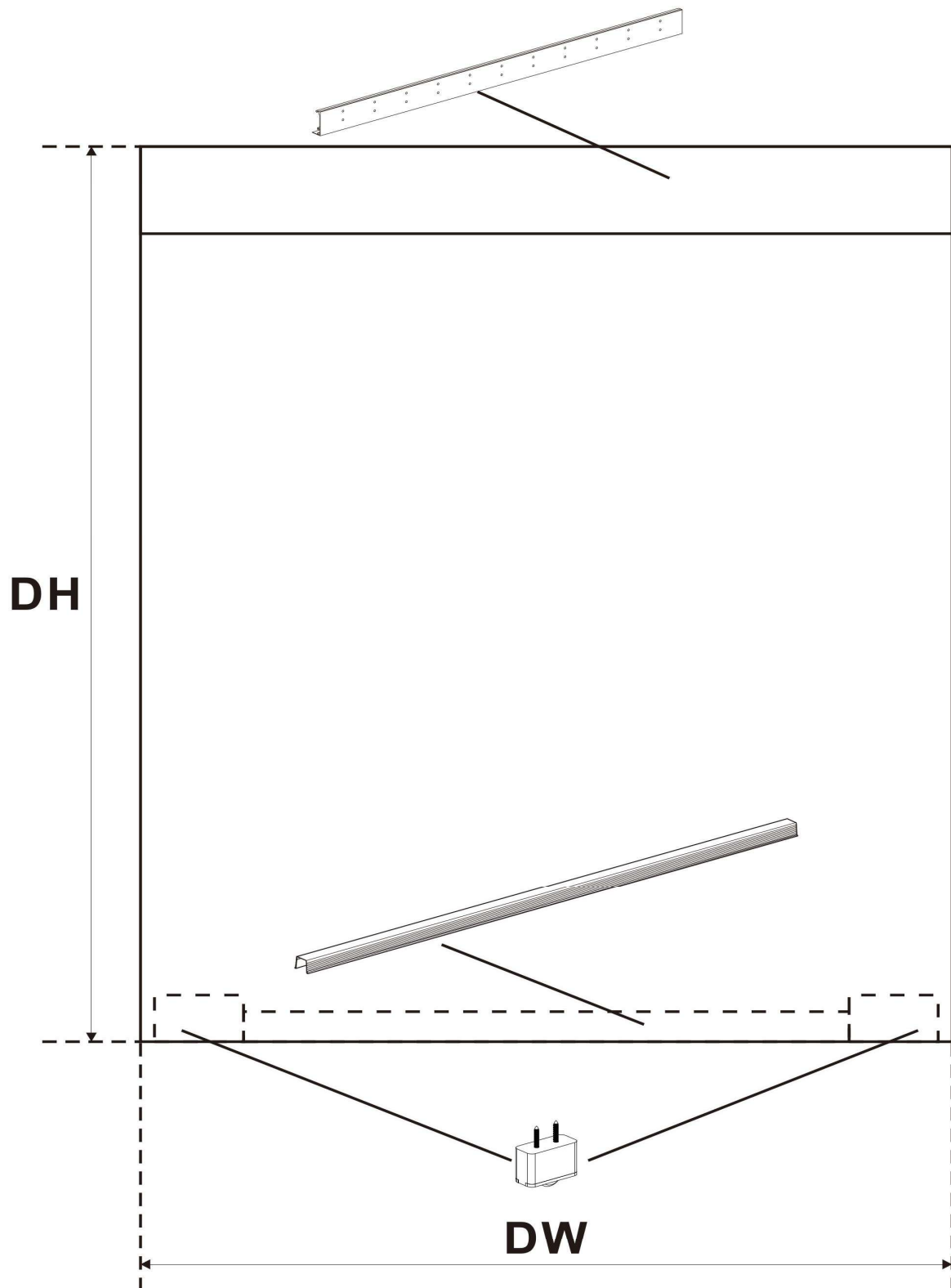
The builder is to confirm all measurements and details prior to manufacture, including product suitability against specifications.

1300 15 15 50

Premium Sliding Doors

ABN 49 612 731 781

Components position



Please check all order details and notes below, before you place order, when you place an order you confirm all details is correct and you agree whit all notes below:



We exclude the installation of cavity sliding doors in our quotation.
 We exclude the preparation or factory fitting of door hardware from our quotation.
 We exclude any painting, finishing, site measurements or site works.

The builder is to confirm all measurements and details prior to manufacture, including product suitability against specifications.

☎ 1300 15 15 50

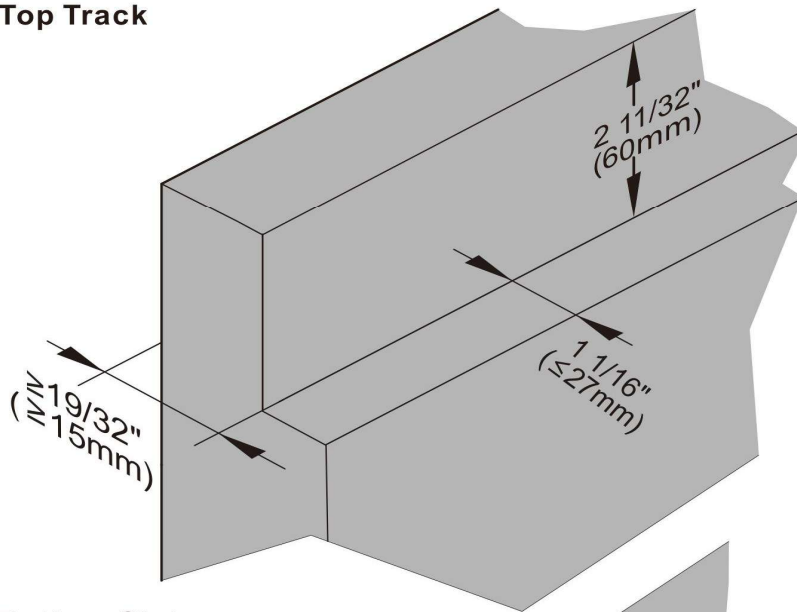
Premium Sliding Doors

ABN 49 612 731 781

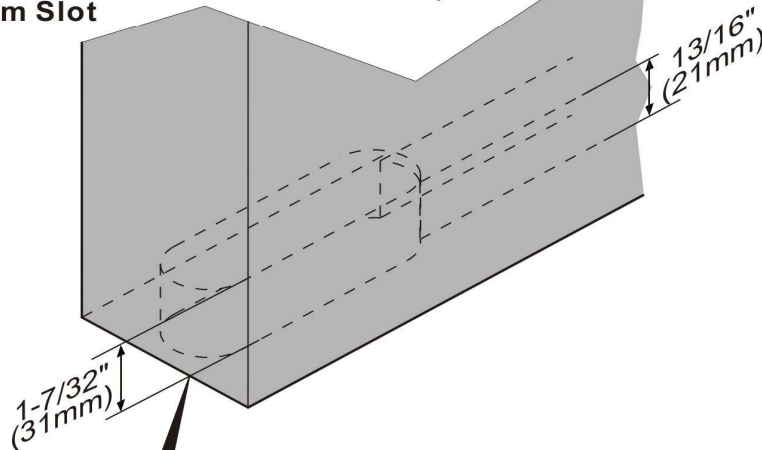


Open top and bottom slots

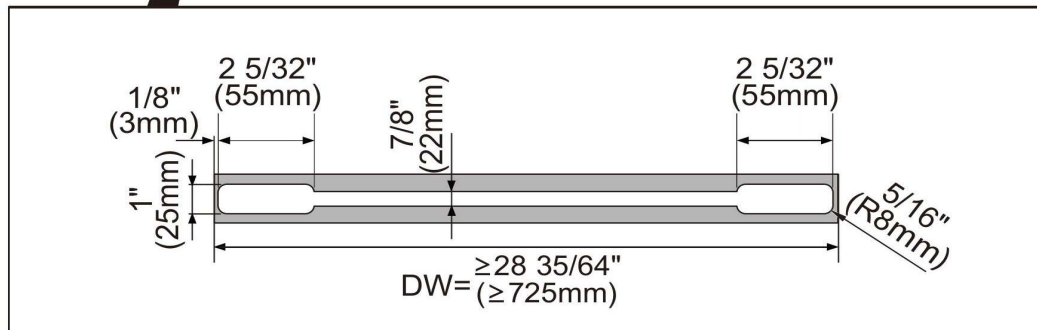
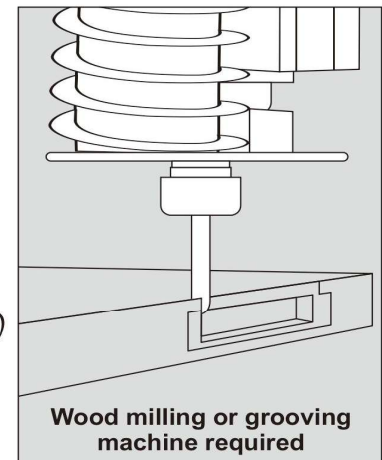
Top Track



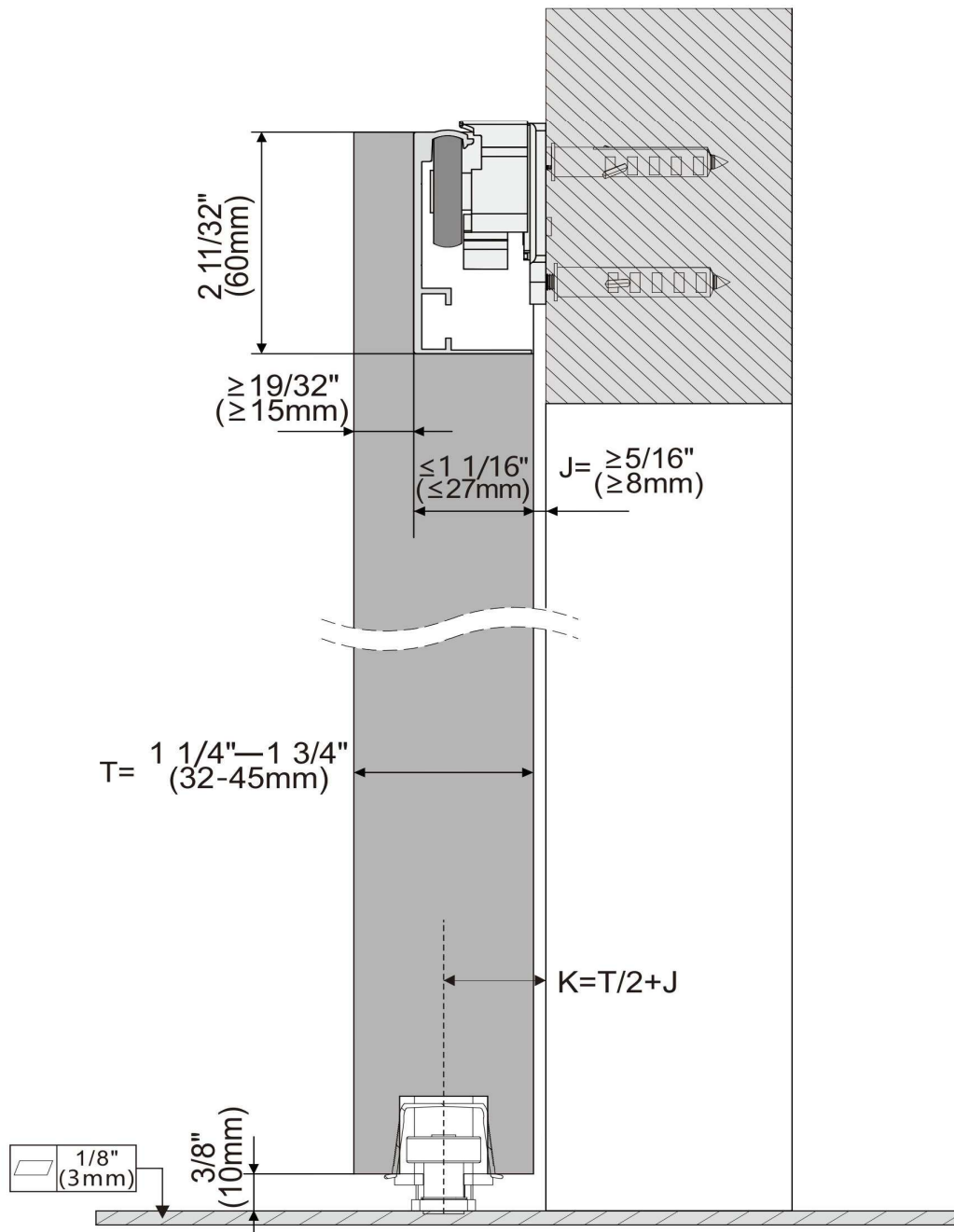
Bottom Slot



Tool



Section drawing



Please check all order details and notes below, before you place order, when you place an order you confirm all details is correct and you agree whit all notes below:



We exclude the installation of cavity sliding doors in our quotation.

We exclude the preparation or factory fitting of door hardware from our quotation.

We exclude any painting, finishing, site measurements or site works.

The builder is to confirm all measurements and details prior to manufacture, including product suitability against specifications.

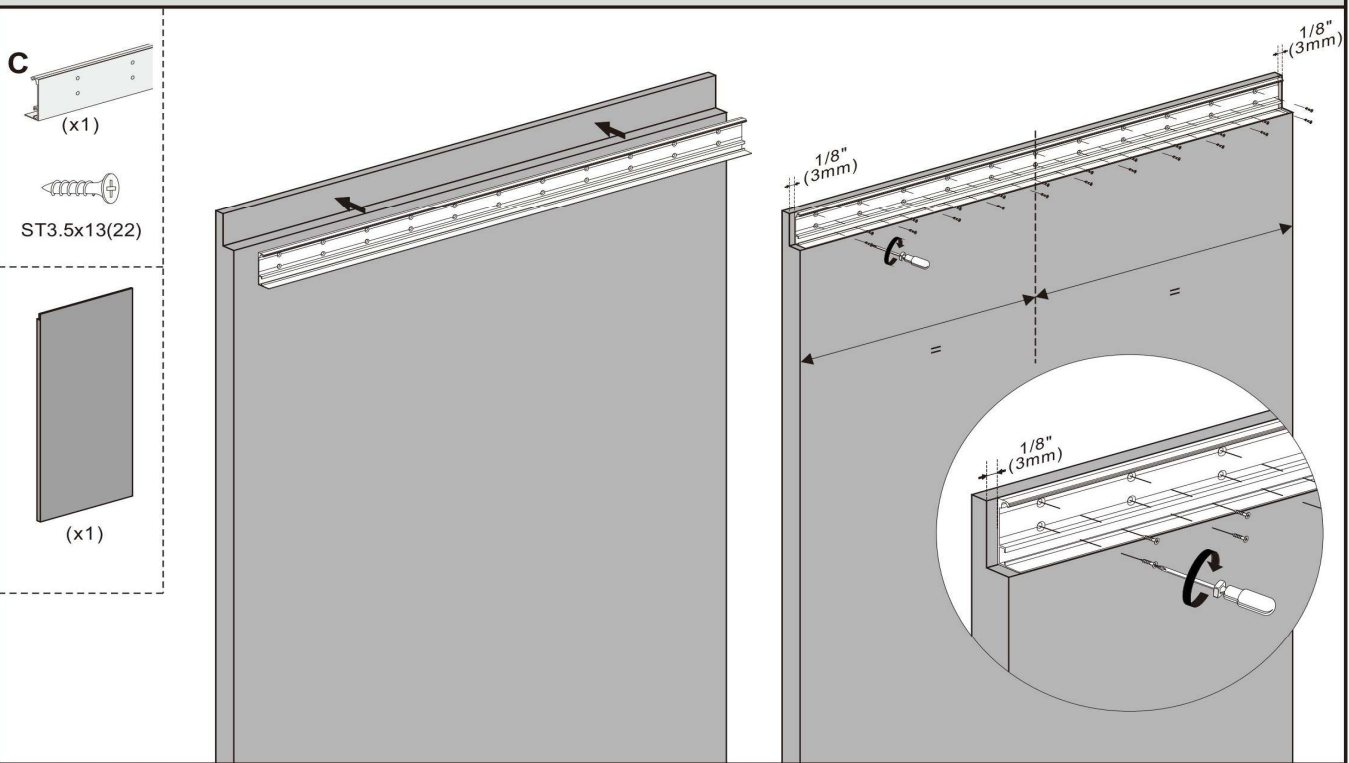
☎ 1300 15 15 50

Premium Sliding Doors

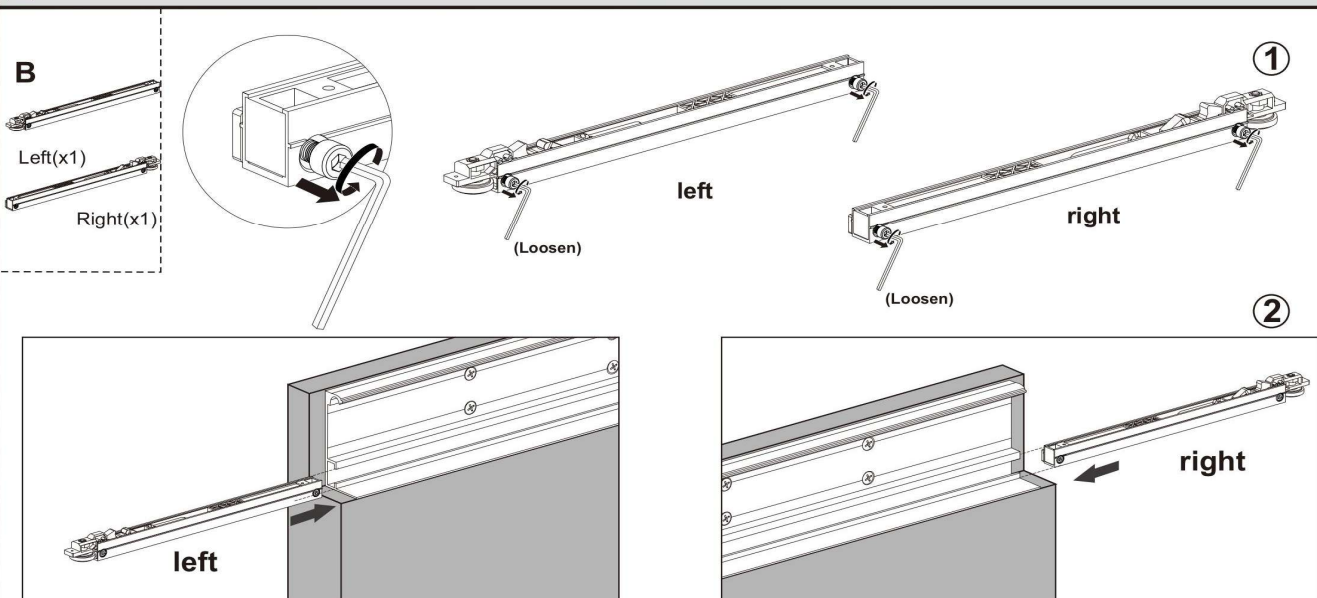
ABN 49 612 731 781

Installation

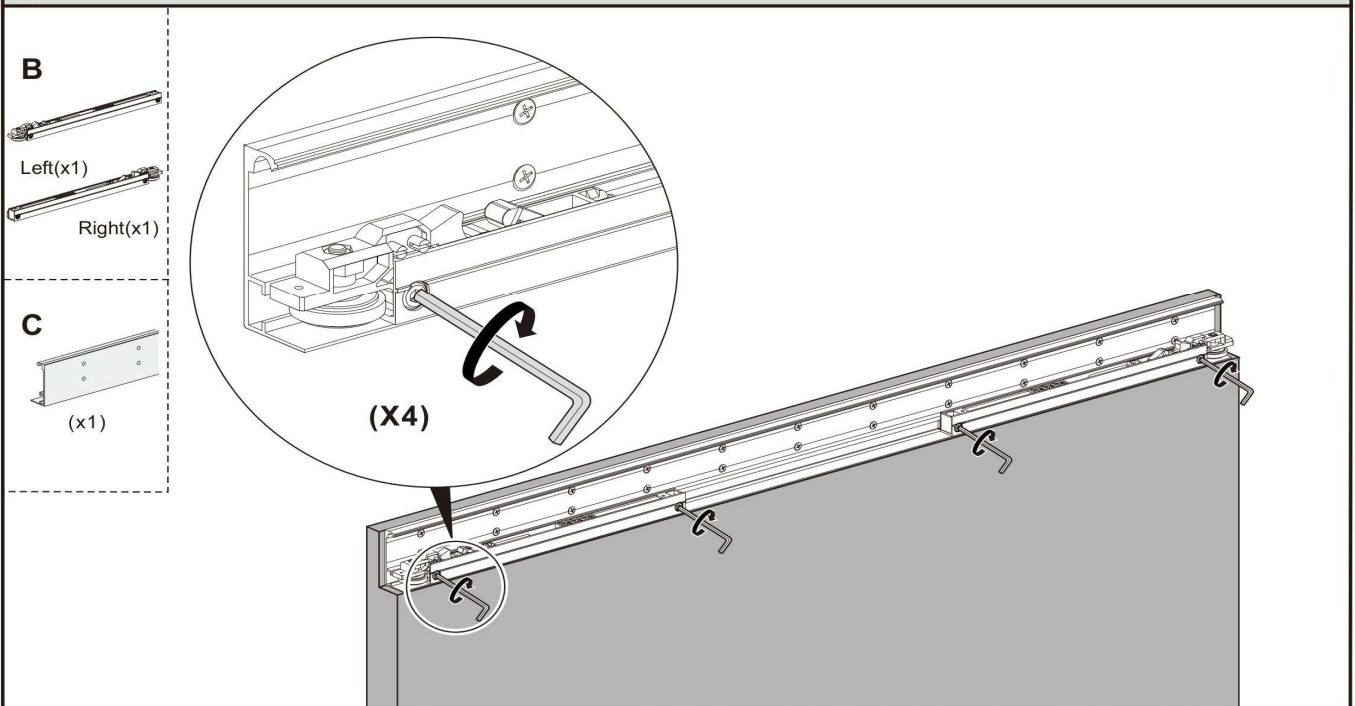
1 Fasten top track onto the door slot.



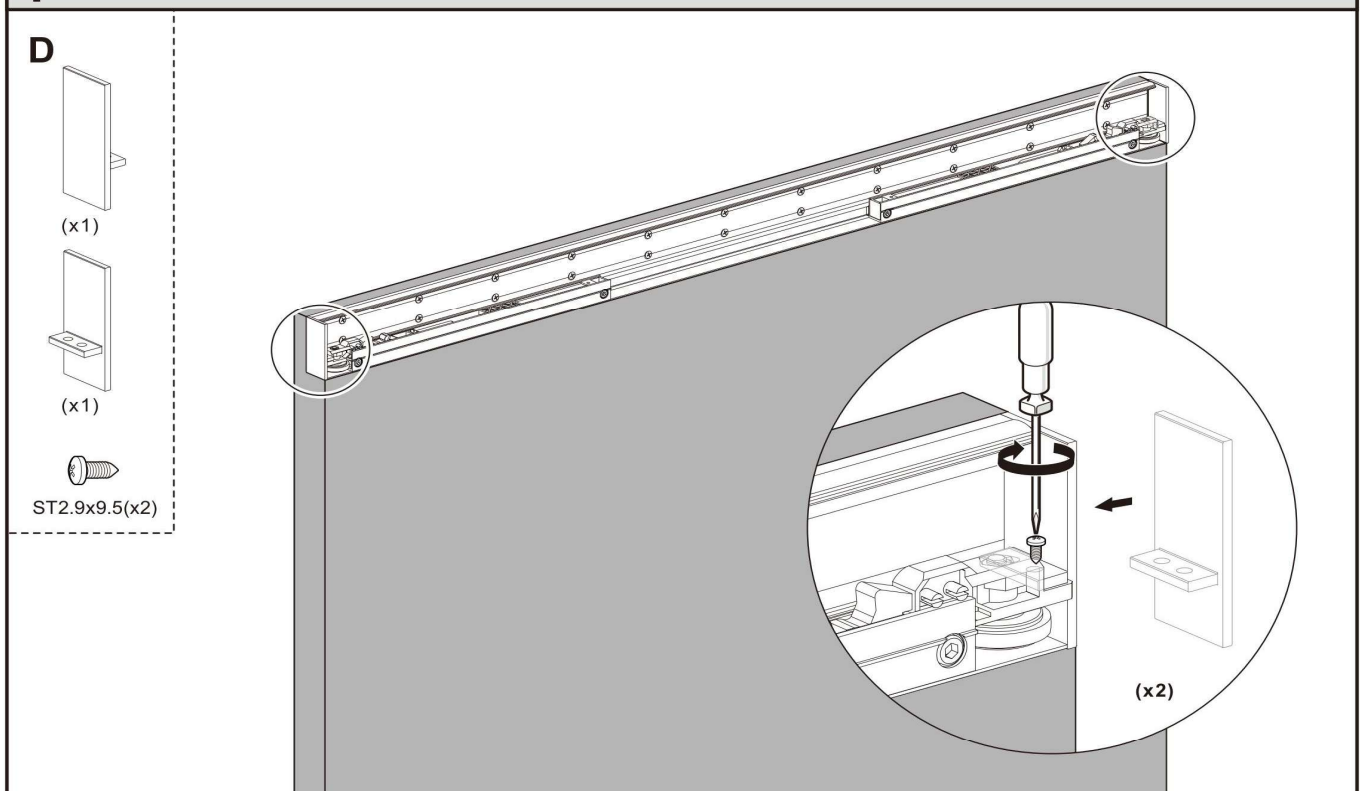
2 loosen the soft close screws and put both soft closes on both ends of top track.



3 Ensure soft close is even with either end of track and tighten soft close screws.



4 Install end caps and secure with screws.



5 Remove the wheel.

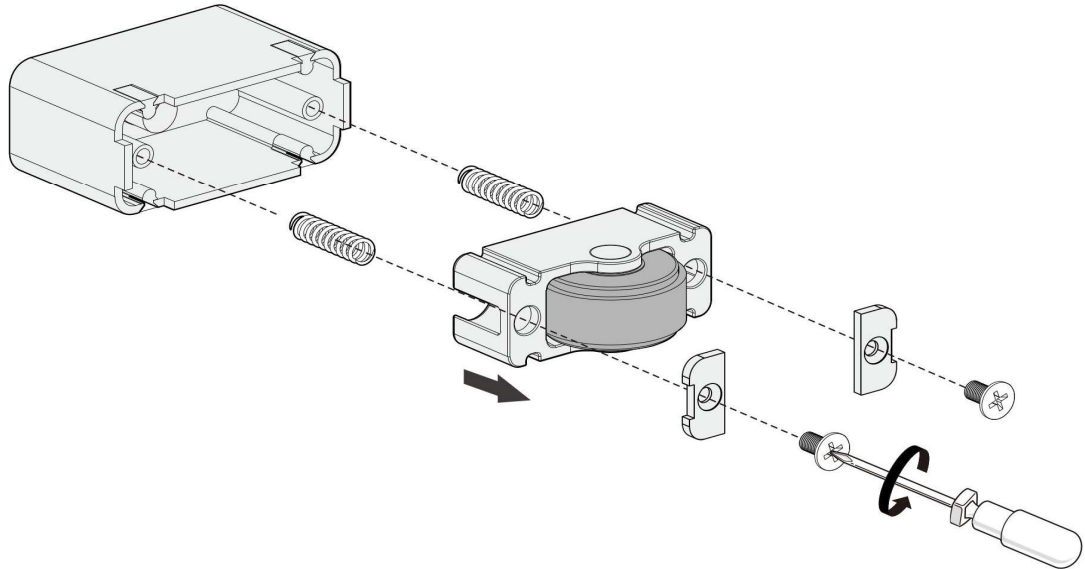
E



(x2)



ST4.2x25 (x4)



6 Fasten the bottom wheel body first.

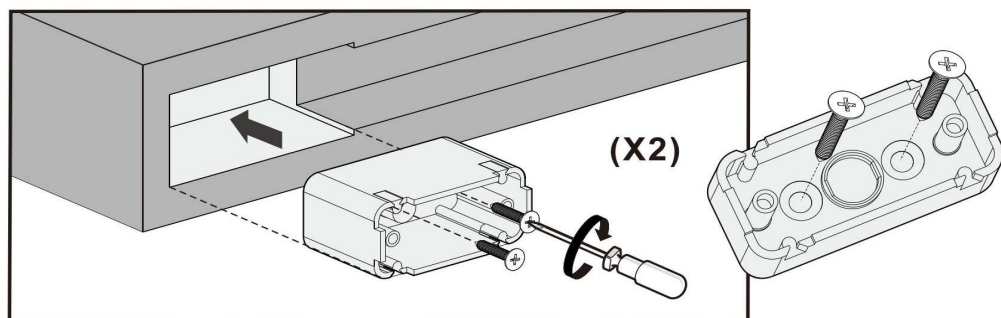
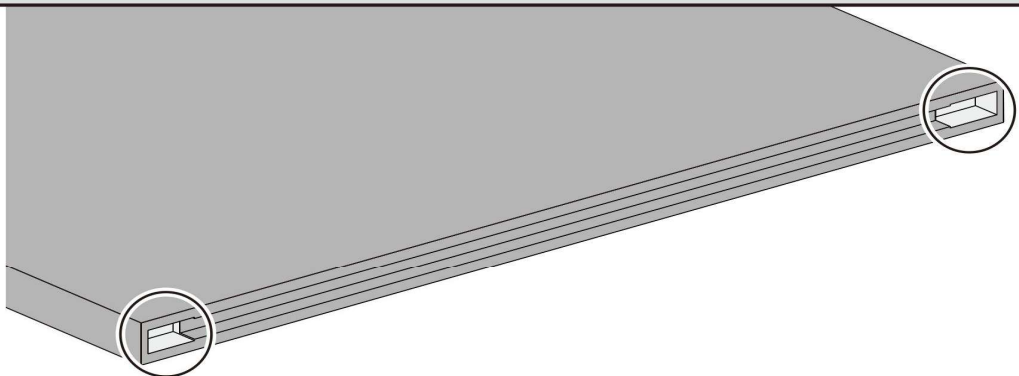
E



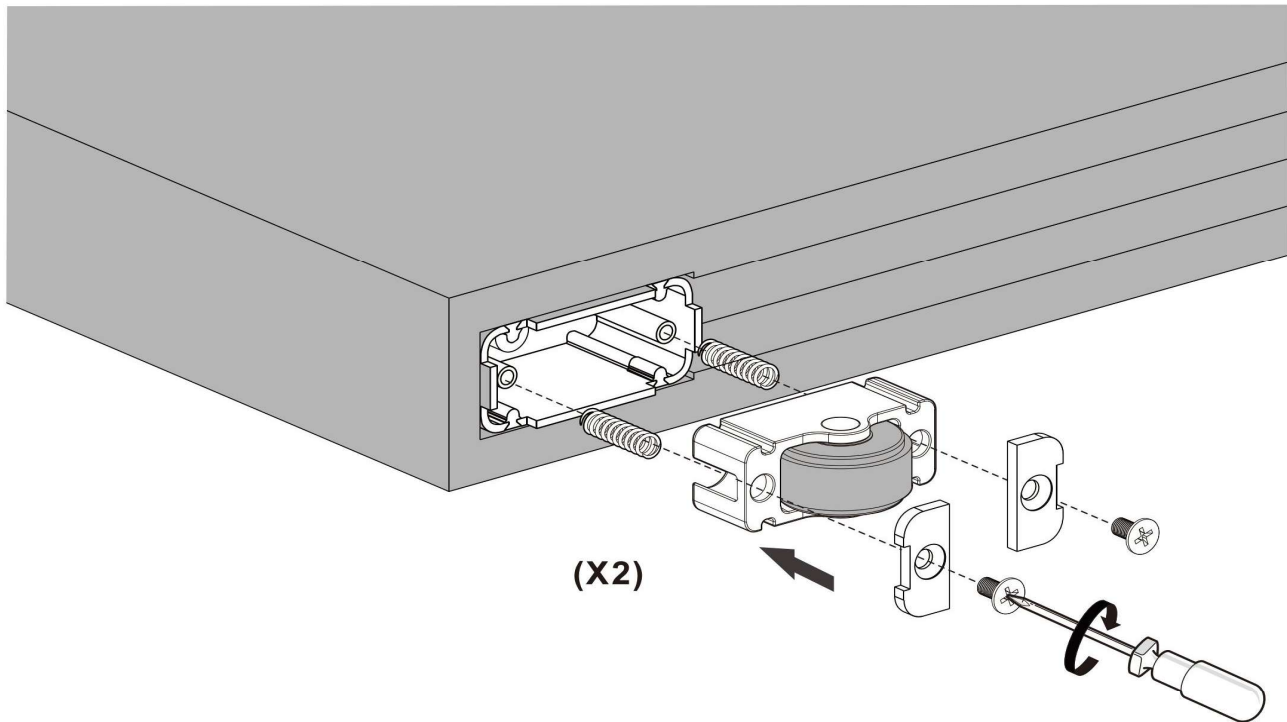
(x2)



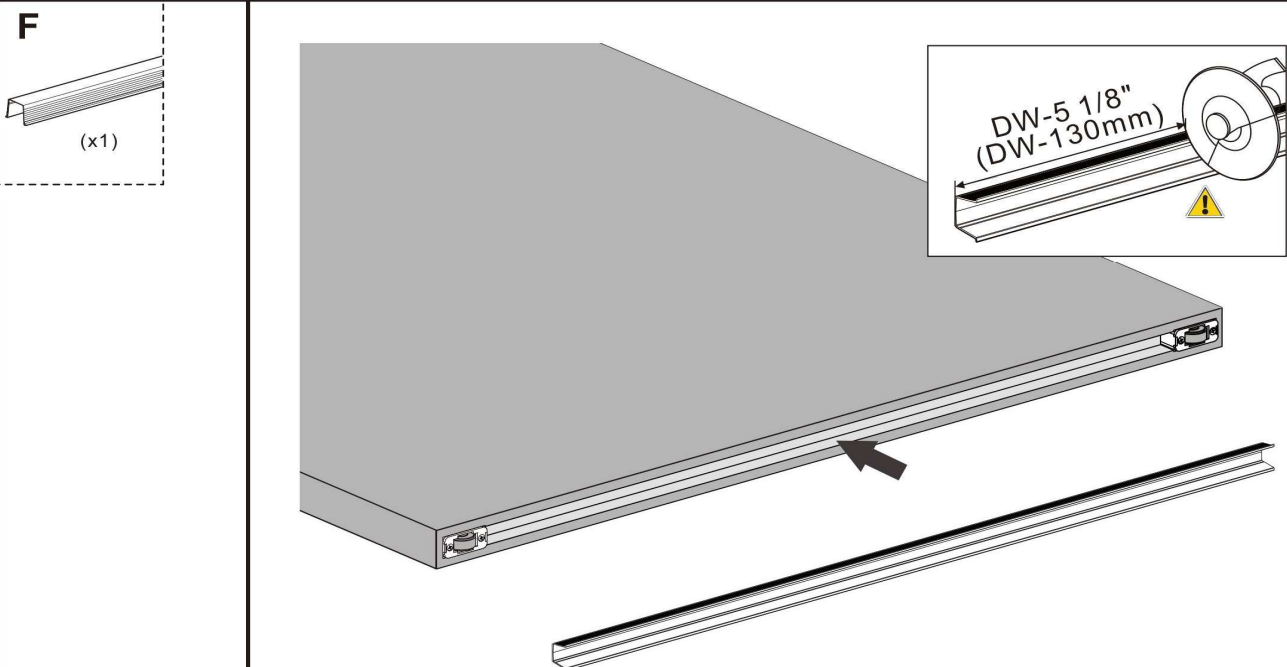
ST4.2x25 (x4)



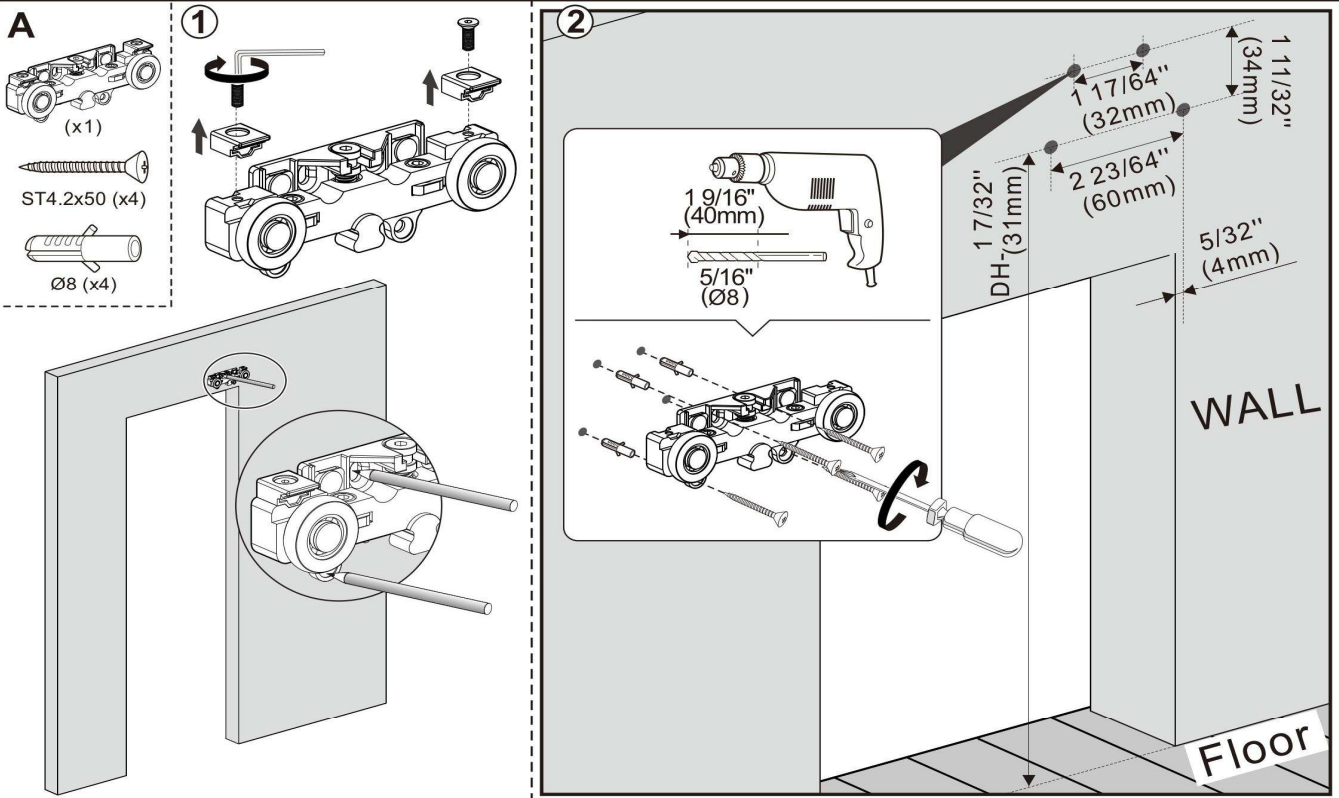
7 Put the wheel part back in the body.



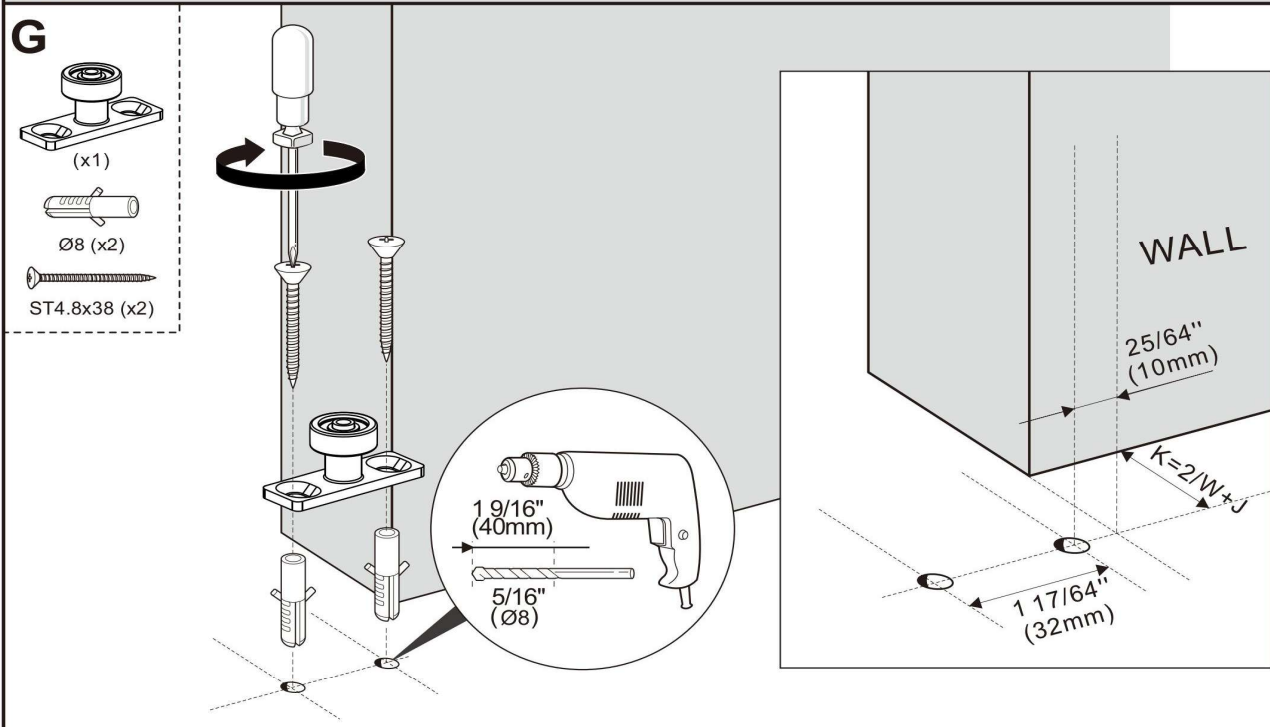
8 Cut bottom track to length (door width-130mm) and put the bottom track inside the bottom slot.



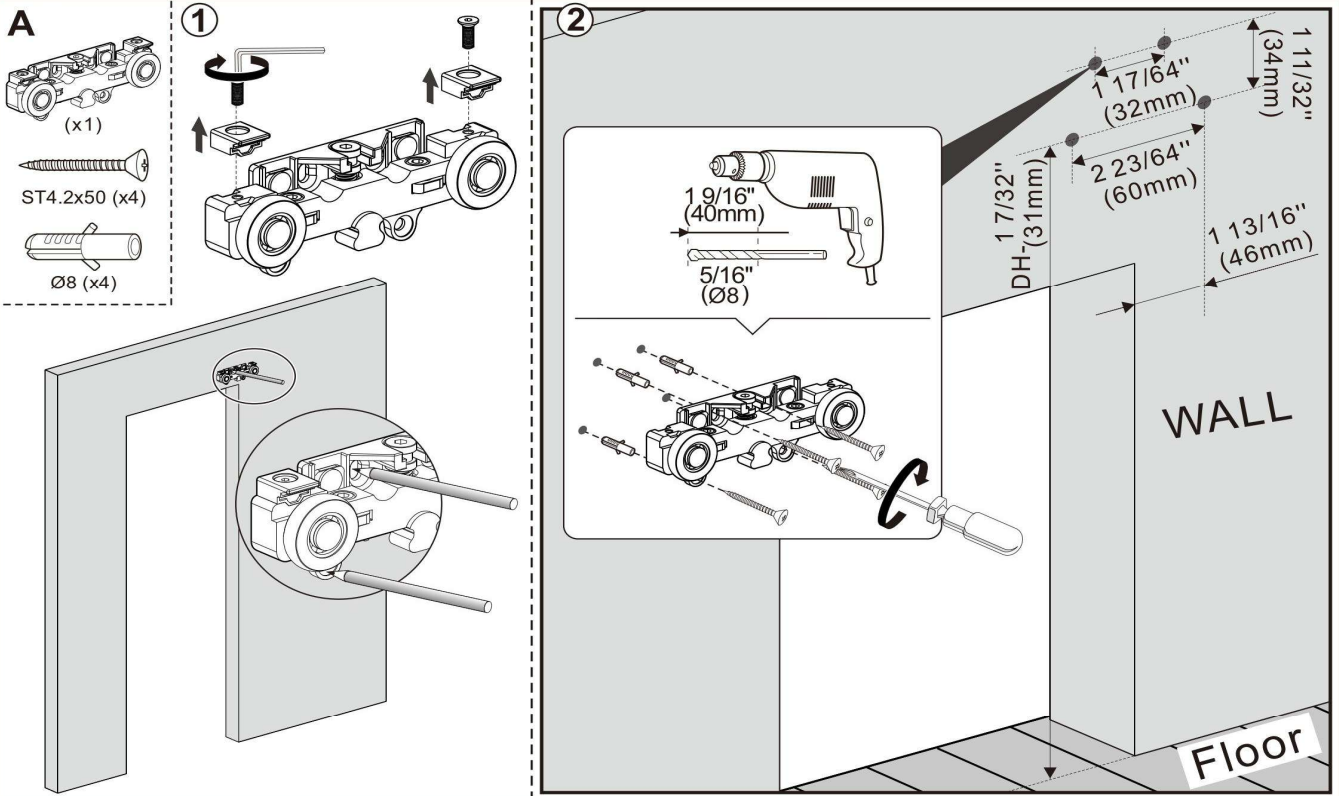
9a Remove anti-jump block of hanger first and mount hanger onto the wall.



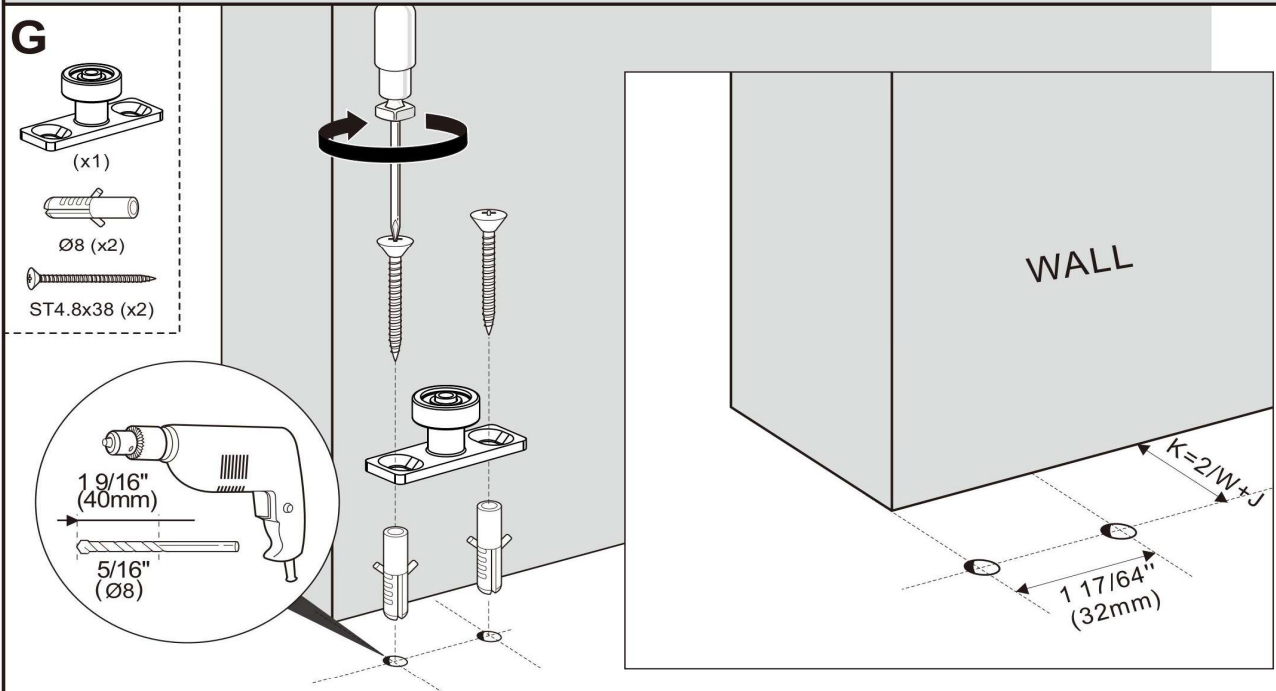
10a Mount floor guide.



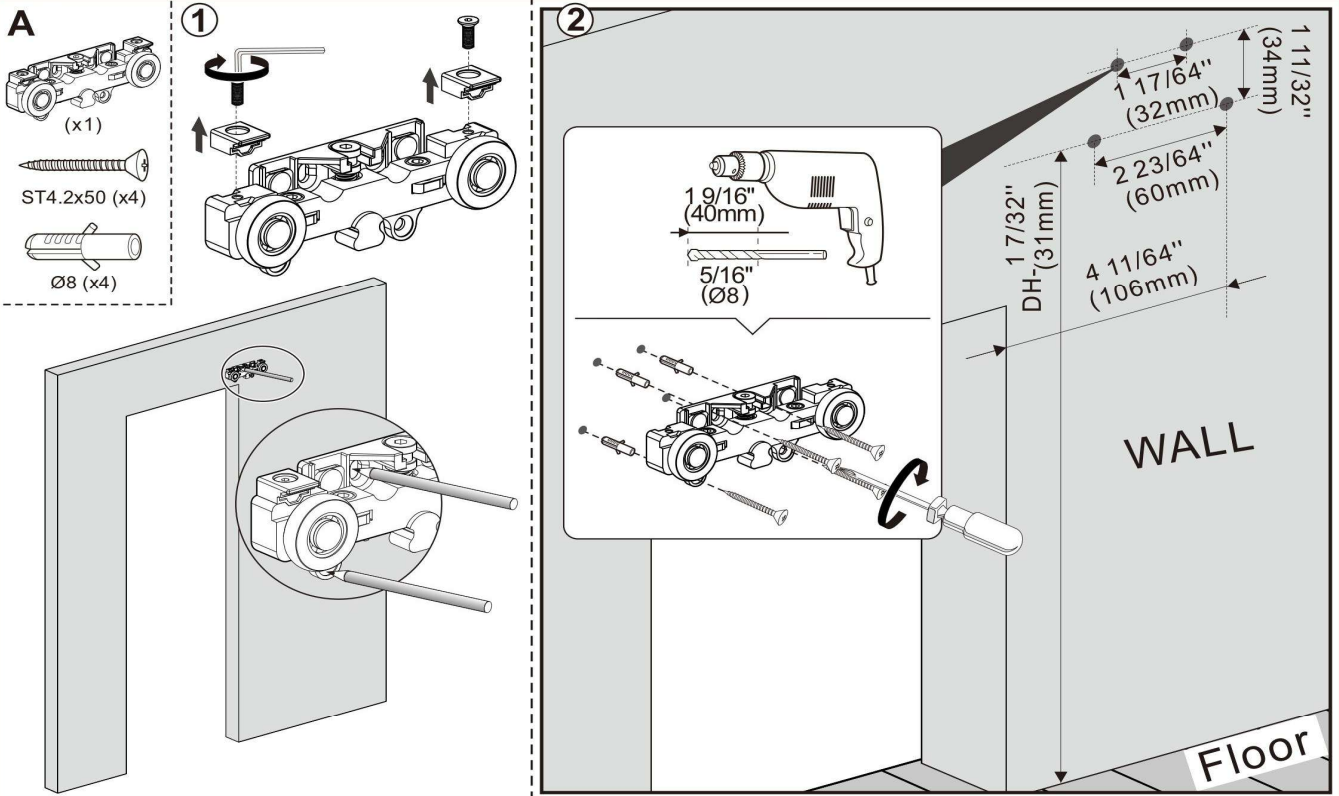
9b Remove anti-jump block of hanger first and mount hanger onto the wall.



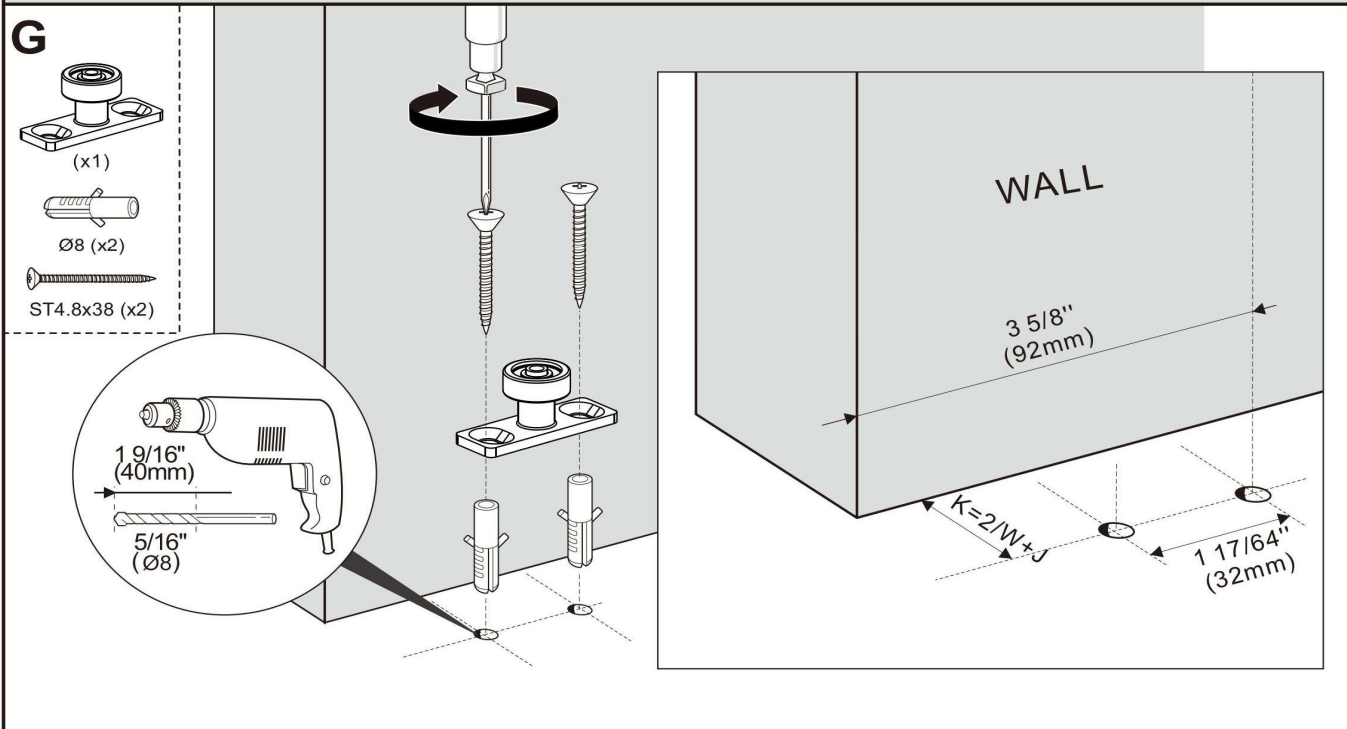
10b Mount floor guide.



9c Remove anti-jump block of hanger first and mount hanger onto the wall.

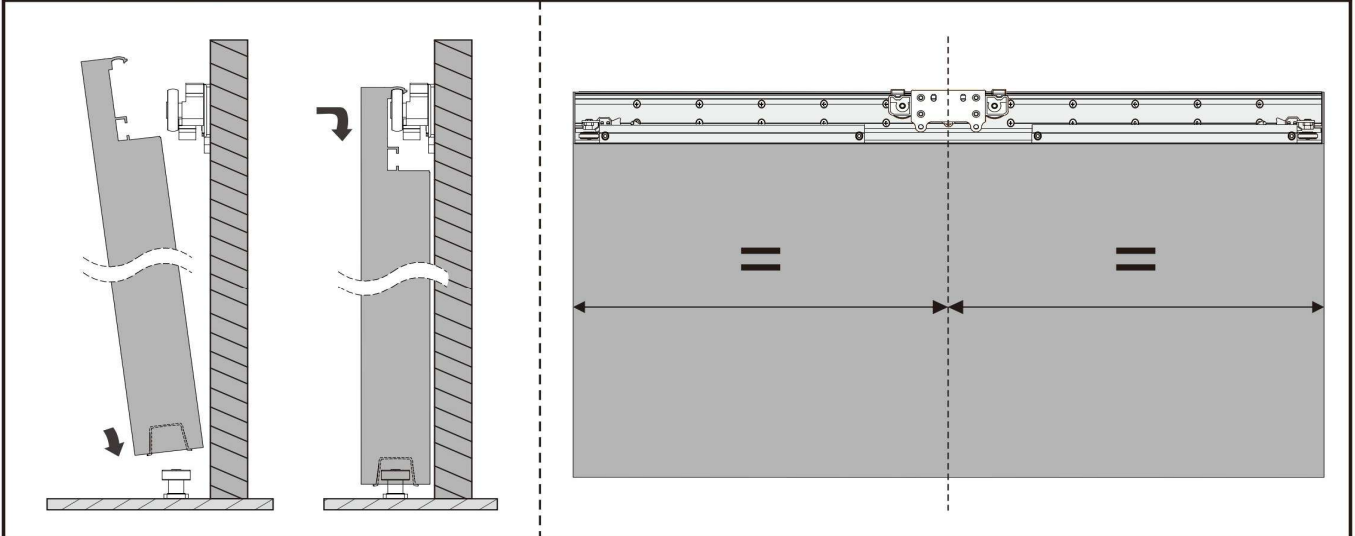


10c Mount floor guide.

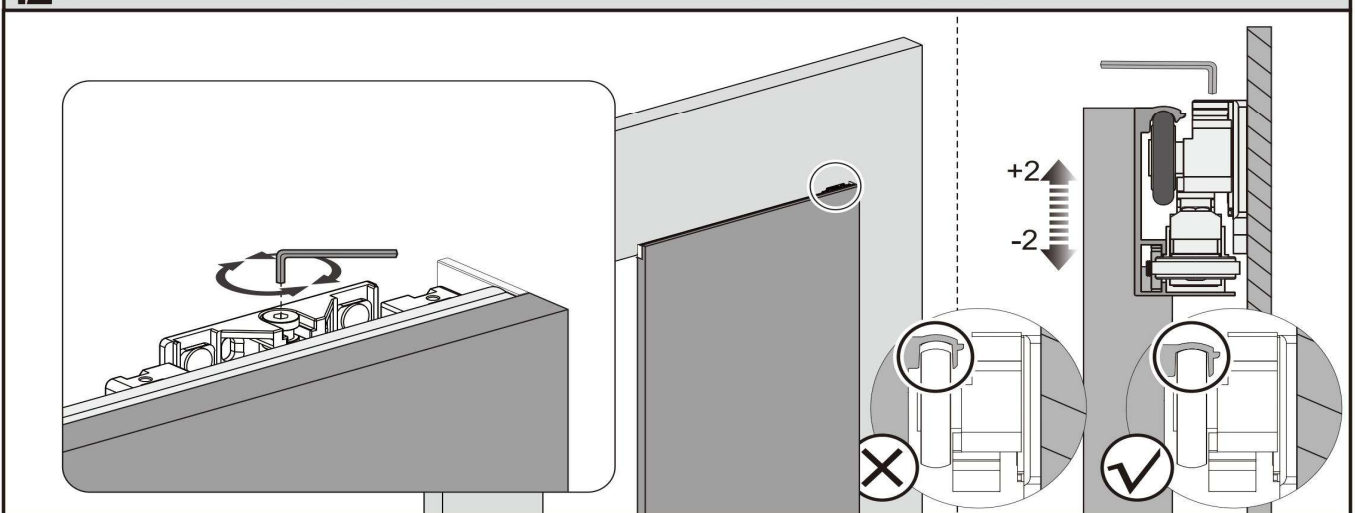




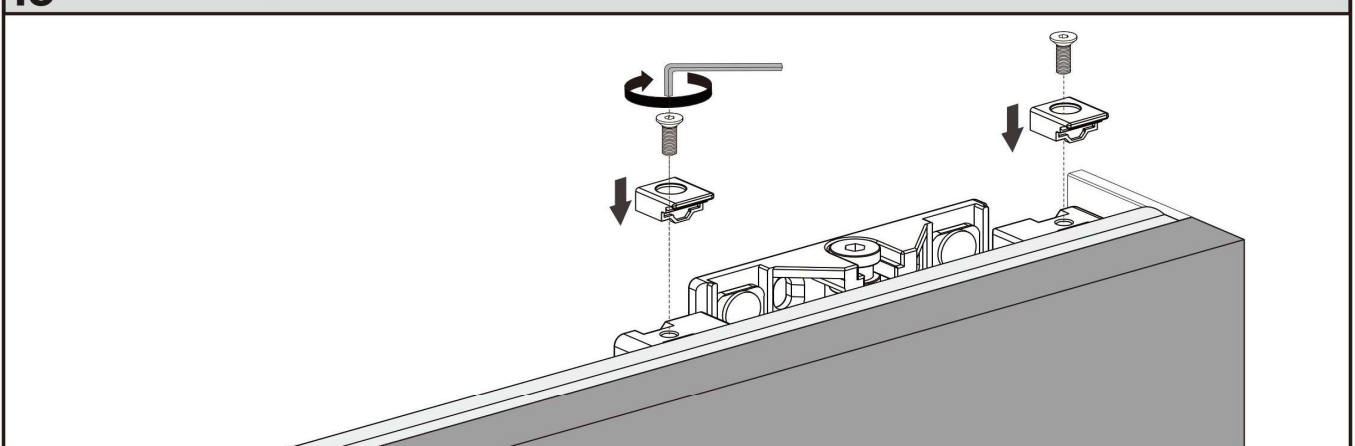
11 Put the floor guide inside the slot and hang door panel on the hanger. (hanger in the middle of top track)



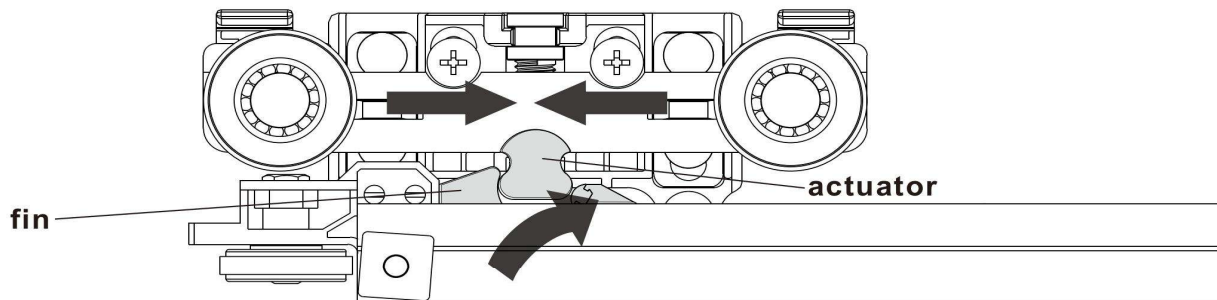
12 Rotate the screw to adjust the height of the wheel for fitting the rail completely.



13 Tighten the anti-jump block screws.



14 Move the door both left and right to ensure actuator is in between the fins of soft close.



15 Adjust the door to ensure it is parallel with wall.

